

InstantBlue™

One Step Ultra fast protein stain

Easy to Use: No washing, fixing, heating or destaining steps required!

Ultra Fast: Visible bands within 15 min or less

Flexible: No risk of over staining

Sensitive: As little as 5ng/band (BSA) of protein can be detected with low background

Non-Toxic: Methanol and Acetic-Acid Free, safe usage and disposal

Extended Stability: 2 years shelf life



 expedeon

InstantBlue™ - ready to use Coomassie protein stain for polyacrylamide gels

InstantBlue™ is formulated as a 1X ready to use staining reagent. Gels can remain in the stain for weeks without risk of over-staining. Only proteins are stained resulting in extremely well defined blue bands on a highly transparent background. The reduction of background interference results in a better signal to noise ratio. Protein bands containing as low as 5 ng per band (BSA) can be detected.

The InstantBlue™ formulation is non-toxic and does not contain any methanol or acetic acid. No methylation or acetylation so proteins stained using InstantBlue™ are compatible with mass spectrometry (MS) analysis and silver staining.



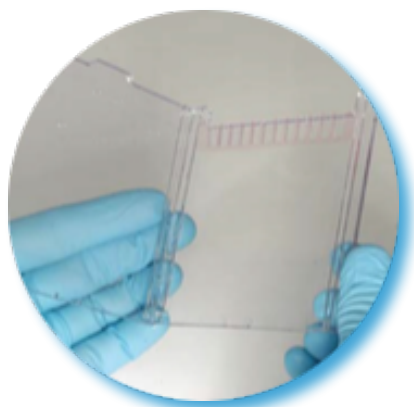
- **Ultra Fast** - Visible bands in 15 minutes or less
- **Single step procedure** - no washing, fixing microwaving or destaining required
- **High sensitivity** - 5ng bands (BSA) detectable
- **Clear background** - High signal/noise ratio
- **Flexible** - No over staining
- **Safe composition** - Non-toxic. No fume hood or solvent disposal required
- **Methanol free** - No gel shrinkage or protein methylation
- **Acetic acid free** - No protein acetylation
- **MS Compatible** - Destainable. No residual methylation or acetylation
- **Quantitative** - batch-to-batch consistency

Comparison with other stains

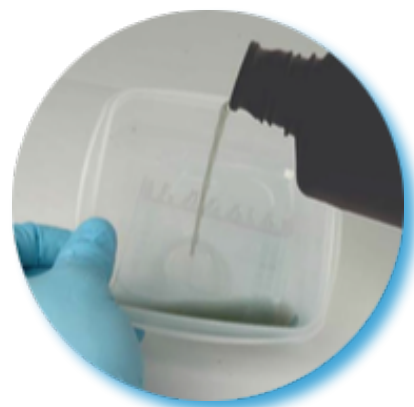
	InstantBlue™ (Expedeon)	SimplyBlue™ (Invitrogen)	GelCode Blue™ (Pierce)	Home-made (Anyone)
No need to wash before staining	✓	3 x 5 mins	3 x 5 mins	Typ. 3 x 5 mins
No need to fix before staining	✓	✓	✗	✗
No need to heat / microwave	✓	✗	✓	✓
No need to de-stain	✓	✗	✗	✗
No risk of over-staining if left too long	✓	✗	✗	✗
Non toxic and easily sink disposed	✓	✓	✗	✗

InstantBlue™ Stain Protocol

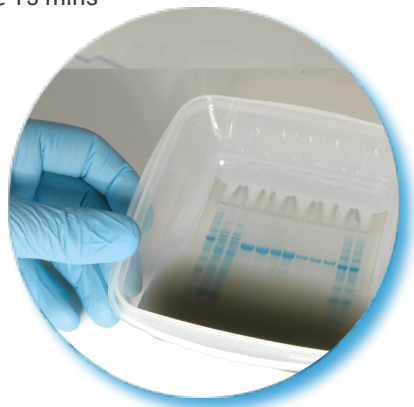
1. Remove Gel



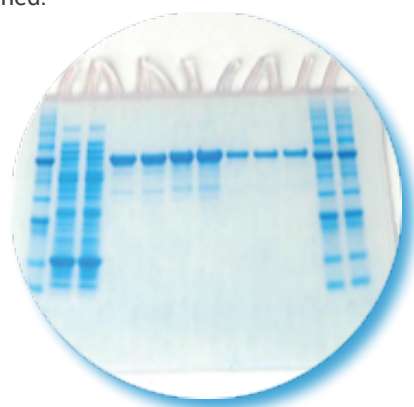
2. Add Stain



3. Incubate 15 mins



4. Finished!



Ordering Information

CAT. NO.	DESCRIPTION
ISB1L	InstantBlue™ Protein Stain