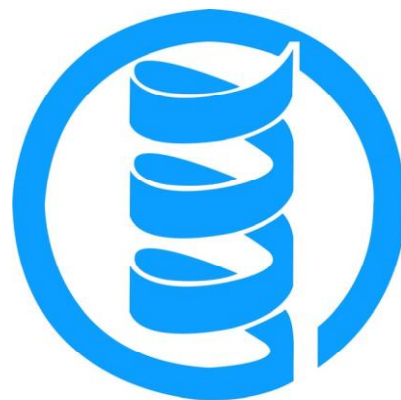




Prestained markers for SDS PAGE



expedeon
PROTEIN SOLUTIONS

Instruction Manual

Introduction

The RunBlue prestained protein markers for SDS PAGE contains 10 recombinant proteins ranging in size from 7.6 kDa to 195 kDa. For easy visualization the 28 kDa and 71 kDa marker have been dyed orange, the other eight markers are blue. The purity and band sharpness mean the markers can be used for visualizing the separation while running the gel, checking transfer effectiveness of your western blot, or as a routine marker in place of other unstained markers.

Storage

Each vial contains 500 µl of markers. Storage long term at -20°C or for 3 months at 4°C. For expiry date see product.

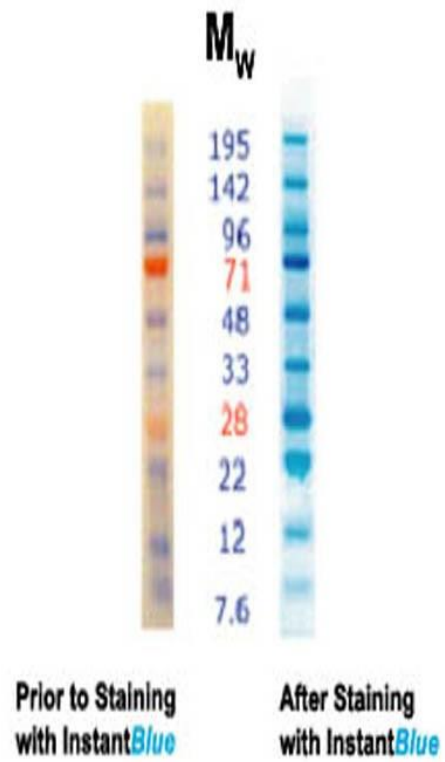
Contact

For technical support email: scientist@expedeeon.com
Expedeeon Ltd Tel: +44 (0)1223 873364
Unit 12, Buckinghamway Fax: +44 (0)1223 873371
Swavesey,
Cambridgeshire CB24 4AE

Recommend Load Volumes

RunBlue prestained markers are provided ready to use in 1x RunBlue sample buffer. Recommended volumes to load are:

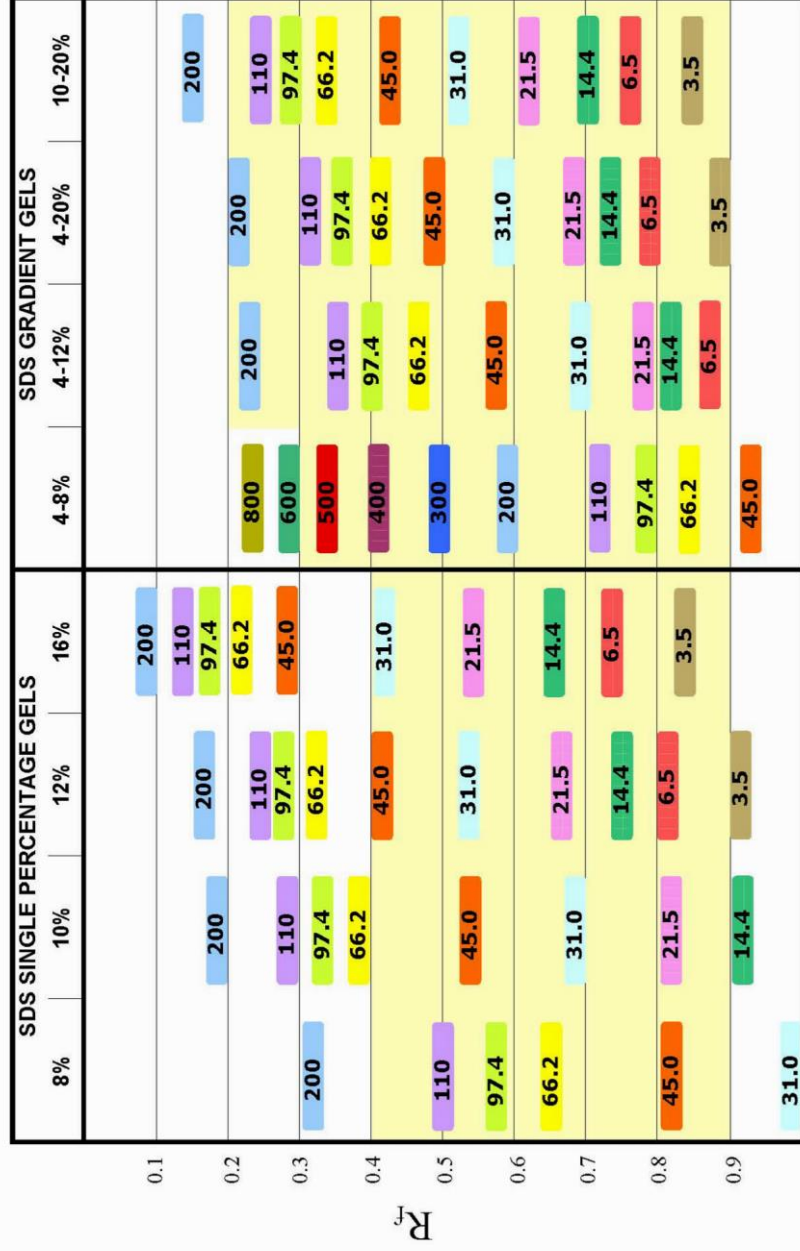
Application	12 well		17 well	
	volume	loads/vial	volume	loads/vial
Monitor during run	10 µl	60	5 µl	120
Visible after blotting	4 µl	150	2 µl	300
Visible after staining	4 µl	150	2 µl	300



RunBlue Prestained Markers separated on a 12% , 12-well RunBlue SDS gel.

RunBlue Protein Migration Chart

This chart will help you select the best RunBlue gel for your application



The shaded areas represent the zone where optimal resolution is obtained